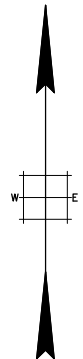
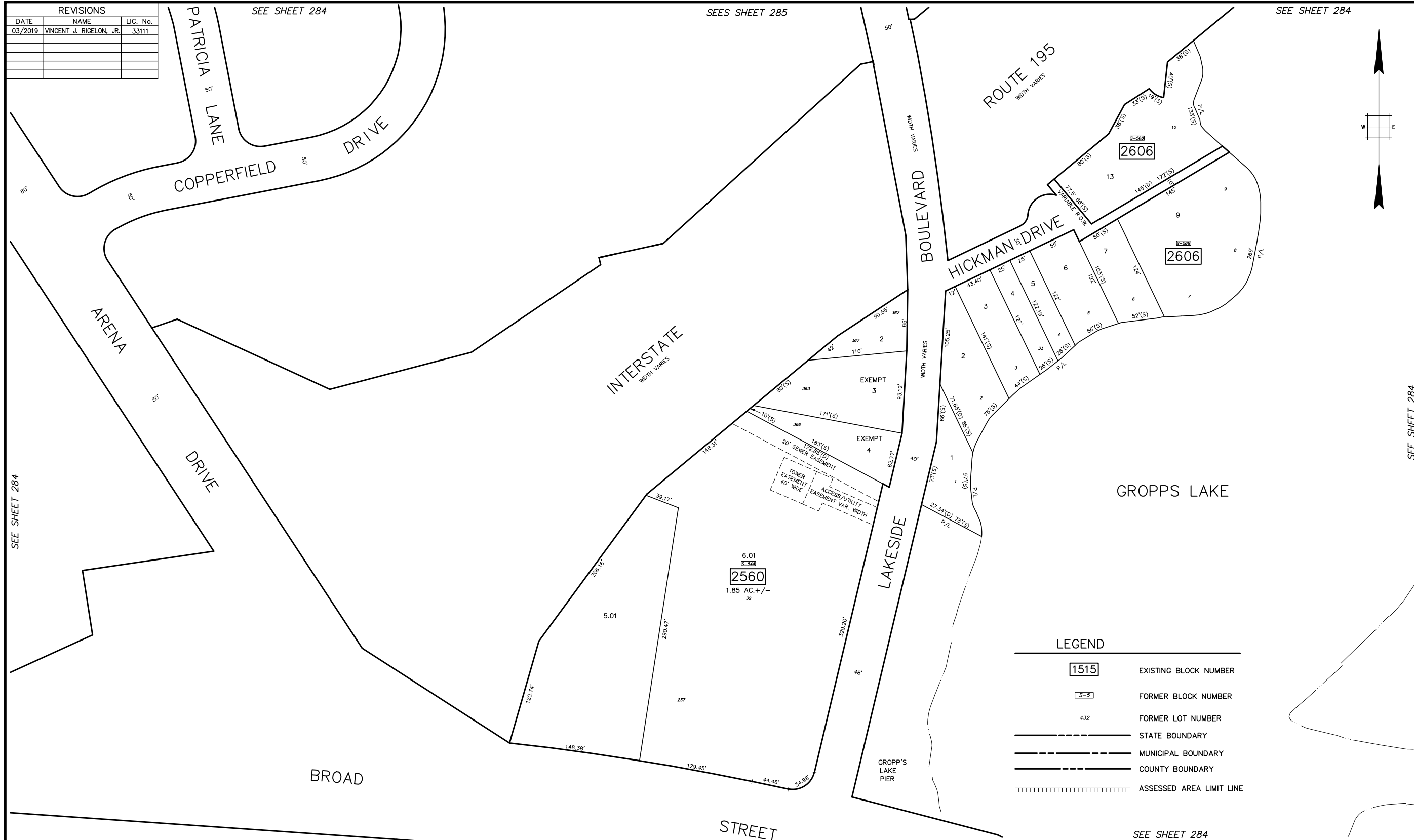


BASE INFO - DCA Rotation: 0°00'00" Base Point: 0,0
PLOTTED: 03/28/96

REVISIONS		
DATE	NAME	LIC. No.
03/2019	VINCENT J. RIGELON, JR.	33111



LEGEND

1515	EXISTING BLOCK NUMBER
S-S	FORMER BLOCK NUMBER
432	FORMER LOT NUMBER
— — — — —	STATE BOUNDARY
— — — — —	MUNICIPAL BOUNDARY
— — — — —	COUNTY BOUNDARY
	ASSESSED AREA LIMIT LINE

<p>INTERSTATE ROUTE 195 WIDTH VARIES</p> <p style="text-align: center;">SEE SHEET 284</p>	<p>NEW JERSEY DEPARTMENT OF THE TREASURY DIVISION OF TAXATION APPROVED AS A TAX MAP PURSUANT TO THE AUTHORITY OF N.J.S.A. 54:1-15 AND N.J.S.A. 54:50-1 FOR THE DIRECTOR, DIVISION OF TAXATION</p> <p>SIGNED BY SUE DAVIDSON, CTA SUPERVISING FIELD REP</p> <p>DATED AUGUST 14, 2014 SERIAL # 1043</p>	<p style="text-align: center;">TAX MAP TOWNSHIP OF HAMILTON MERCER COUNTY, NEW JERSEY SCALE 1" = 50' APRIL, 1996</p> <p style="text-align: center;">MICHAEL GUERRIERO, P.L.S. T & M ASSOCIATES 11 TINDALL ROAD, MIDDLETOWN TOWNSHIP NEW JERSEY, 07748 *TO SHOW CONDITIONS AS OF JULY 14, 2014*</p>
---	---	---