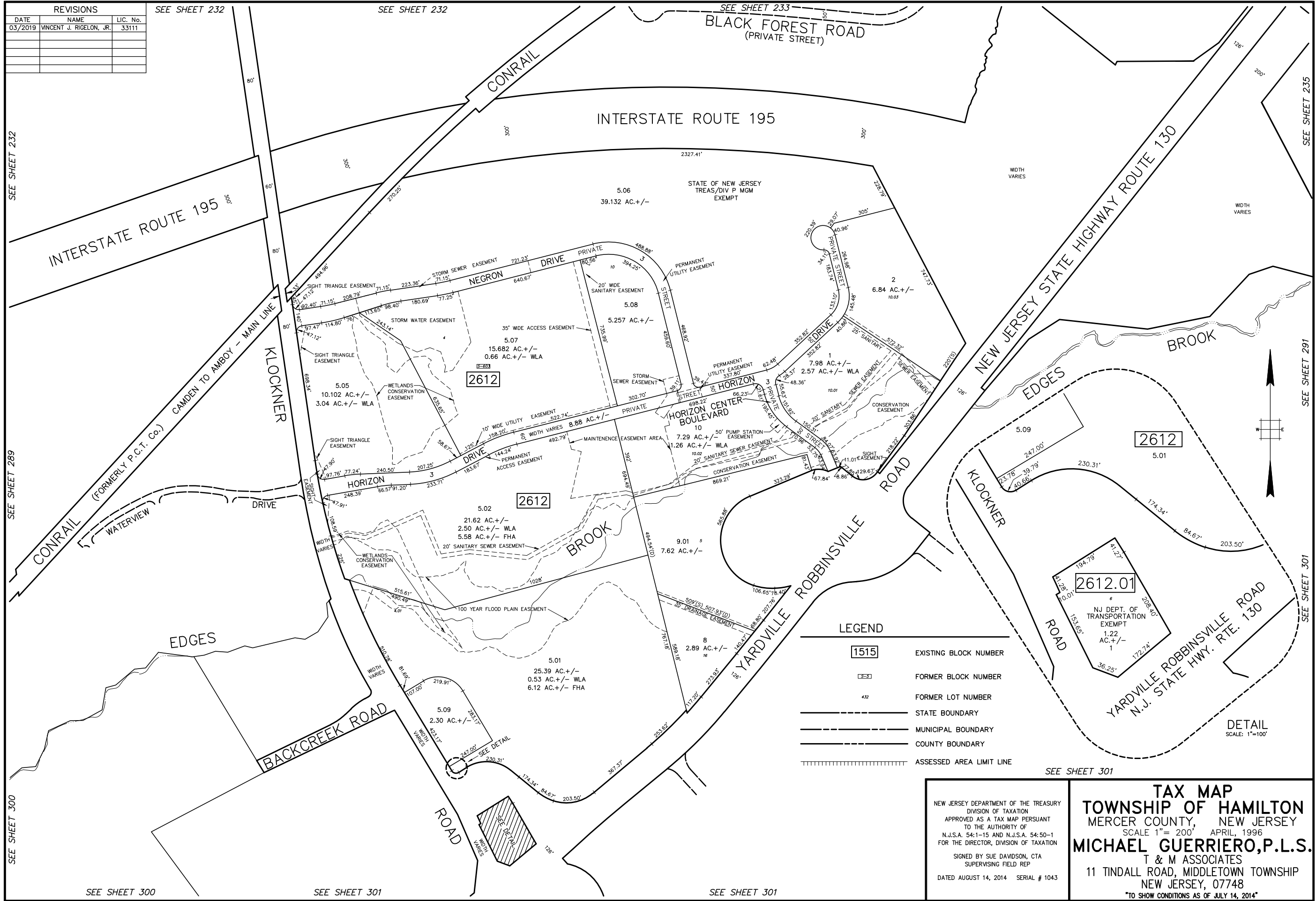


REVISIONS		
DATE	NAME	LIC. No.
03/2019	VINCENT J. RIGELON, JR.	33111



SEE SHEET 232
SEE SHEET 233
SEE SHEET 289
SEE SHEET 300
SEE SHEET 301

SEE SHEET 235
SEE SHEET 291
SEE SHEET 301

SEE SHEET 300
SEE SHEET 301
SEE SHEET 301

LEGEND

1515	EXISTING BLOCK NUMBER
1515	FORMER BLOCK NUMBER
432	FORMER LOT NUMBER
---	STATE BOUNDARY
---	MUNICIPAL BOUNDARY
---	COUNTY BOUNDARY
	ASSESSED AREA LIMIT LINE

TAX MAP
TOWNSHIP OF HAMILTON
MERCER COUNTY, NEW JERSEY
SCALE 1" = 200' APRIL, 1996
MICHAEL GUERRIERO, P.L.S.
T & M ASSOCIATES
11 TINDALL ROAD, MIDDLETOWN TOWNSHIP
NEW JERSEY, 07748
TO SHOW CONDITIONS AS OF JULY 14, 2014

NEW JERSEY DEPARTMENT OF THE TREASURY
DIVISION OF TAXATION
APPROVED AS A TAX MAP PURSUANT
TO THE AUTHORITY OF
N.J.S.A. 54-1-15 AND N.J.S.A. 54-50-1
FOR THE DIRECTOR, DIVISION OF TAXATION
SIGNED BY SUE DAVIDSON, CTA
SUPERVISING FIELD REP
DATED AUGUST 14, 2014 SERIAL # 1043