

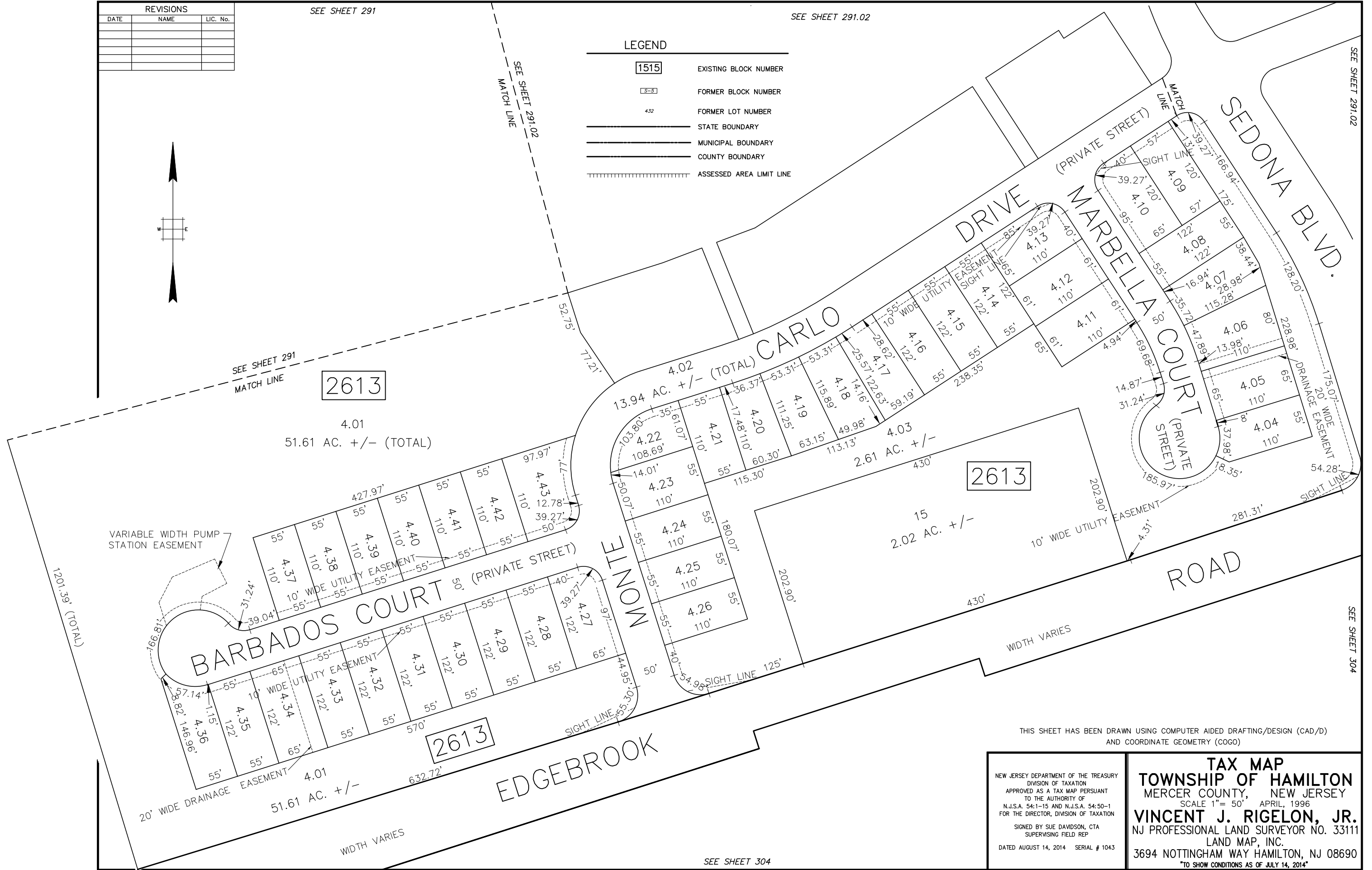
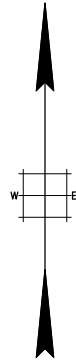
REVISIONS		
DATE	NAME	LIC. No.

SEE SHEET 291

SEE SHEET 291.02

LEGEND

- 1515 EXISTING BLOCK NUMBER
- S-5 FORMER BLOCK NUMBER
- 432 FORMER LOT NUMBER
- STATE BOUNDARY
- MUNICIPAL BOUNDARY
- COUNTY BOUNDARY
- ASSESSED AREA LIMIT LINE



THIS SHEET HAS BEEN DRAWN USING COMPUTER AIDED DRAFTING/DESIGN (CAD/D)
AND COORDINATE GEOMETRY (COGO)

NEW JERSEY DEPARTMENT OF THE TREASURY
DIVISION OF TAXATION
APPROVED AS A TAX MAP PURSUANT
TO THE AUTHORITY OF
N.J.S.A. 54-1-15 AND N.J.S.A. 54-50-1
FOR THE DIRECTOR, DIVISION OF TAXATION
SIGNED BY SUE DAVIDSON, CTA
SUPERVISING FIELD REP
DATED AUGUST 14, 2014 SERIAL # 1043

TAX MAP
TOWNSHIP OF HAMILTON
MERCER COUNTY, NEW JERSEY
SCALE 1" = 50' APRIL, 1996
VINCENT J. RIGELON, JR.
NJ PROFESSIONAL LAND SURVEYOR NO. 33111
LAND MAP, INC.
3694 NOTTINGHAM WAY HAMILTON, NJ 08690
TO SHOW CONDITIONS AS OF JULY 14, 2014

SEE SHEET 304