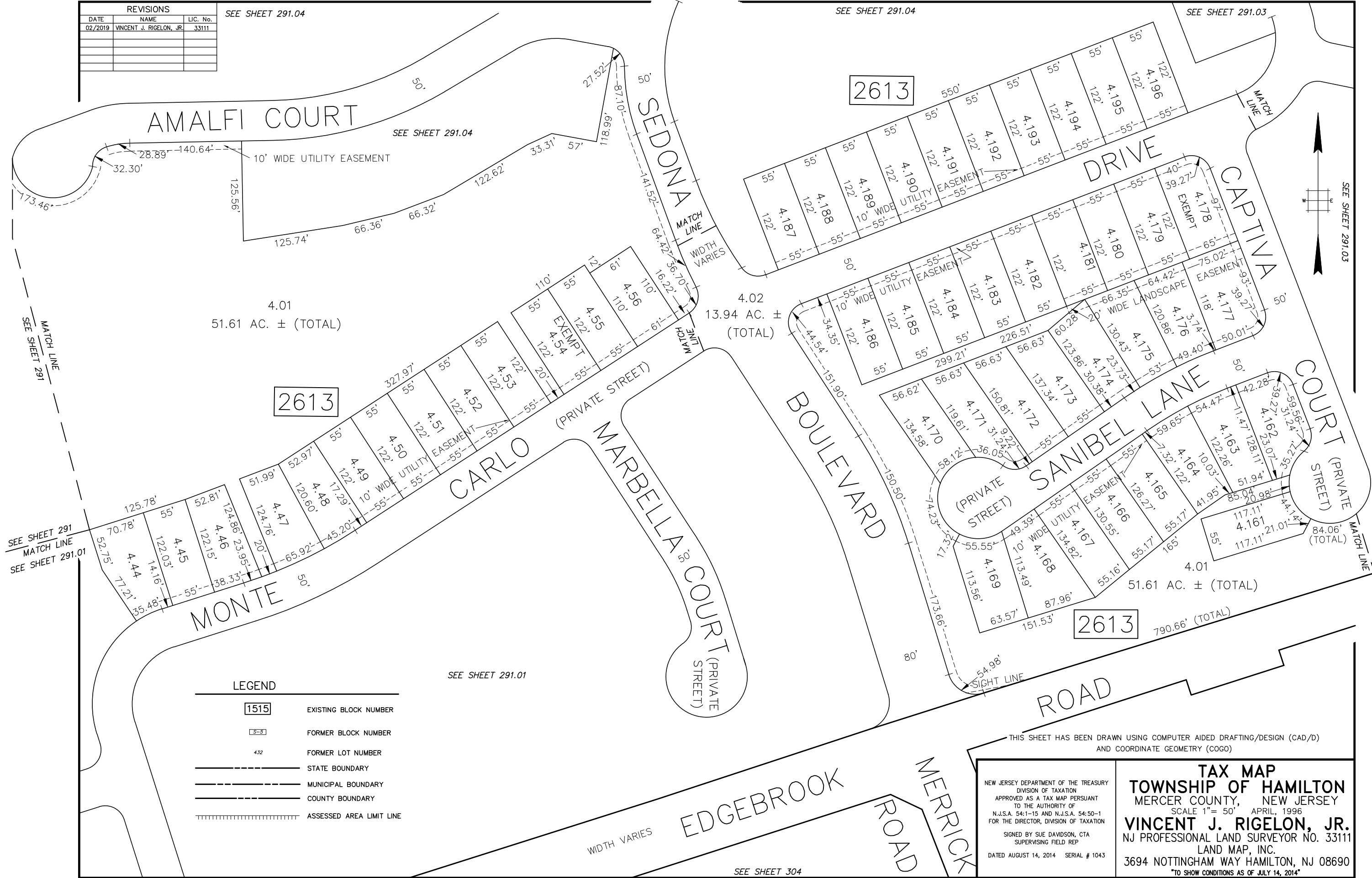


REVISIONS		
DATE	NAME	LIC. No.
02/2019	VINCENT J. RIGELON, JR.	33111

SEE SHEET 291.04

SEE SHEET 291.04

SEE SHEET 291.03



4.01  
51.61 AC. ± (TOTAL)

4.02  
13.94 AC. ± (TOTAL)

4.01  
51.61 AC. ± (TOTAL)

790.66' (TOTAL)

LEGEND

<span style="border: 1px solid black; padding: 2px;">1515</span>	EXISTING BLOCK NUMBER
<span style="border: 1px dashed black; padding: 2px;">S-5</span>	FORMER BLOCK NUMBER
432	FORMER LOT NUMBER
—————	STATE BOUNDARY
—————	MUNICIPAL BOUNDARY
—————	COUNTY BOUNDARY
	ASSESSED AREA LIMIT LINE

SEE SHEET 291.01

WIDTH VARIES

SEE SHEET 304

THIS SHEET HAS BEEN DRAWN USING COMPUTER AIDED DRAFTING/DESIGN (CAD/D) AND COORDINATE GEOMETRY (COGO)

NEW JERSEY DEPARTMENT OF THE TREASURY  
DIVISION OF TAXATION  
APPROVED AS A TAX MAP PURSUANT  
TO THE AUTHORITY OF  
N.J.S.A. 54:1-15 AND N.J.S.A. 54:50-1  
FOR THE DIRECTOR, DIVISION OF TAXATION

SIGNED BY SUE DAVIDSON, CTA  
SUPERVISING FIELD REP

DATED AUGUST 14, 2014 SERIAL # 1043

**TAX MAP**  
**TOWNSHIP OF HAMILTON**  
MERCER COUNTY, NEW JERSEY  
SCALE 1" = 50' APRIL, 1996  
**VINCENT J. RIGELON, JR.**  
NJ PROFESSIONAL LAND SURVEYOR NO. 33111  
LAND MAP, INC.  
3694 NOTTINGHAM WAY HAMILTON, NJ 08690  
\*TO SHOW CONDITIONS AS OF JULY 14, 2014\*