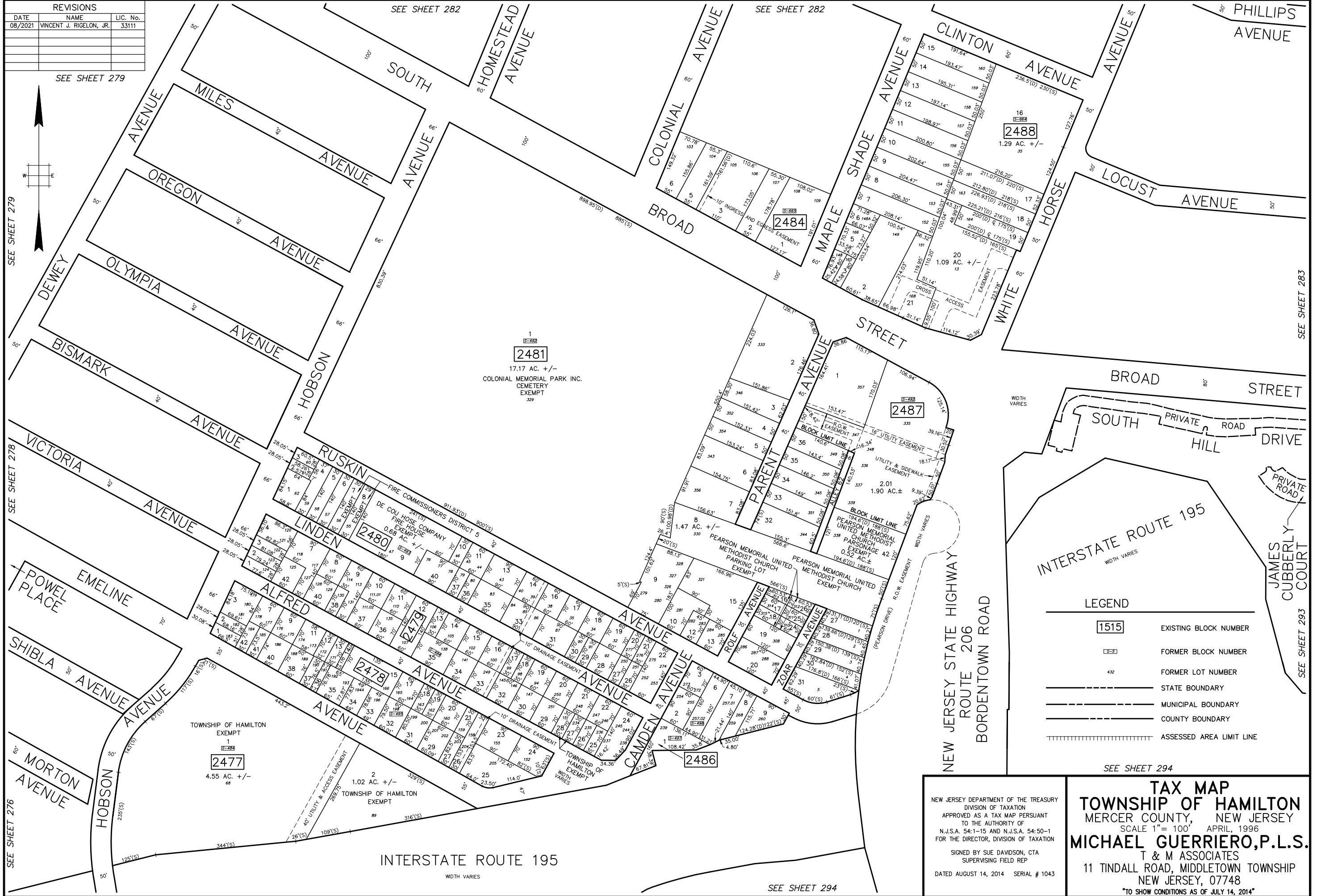
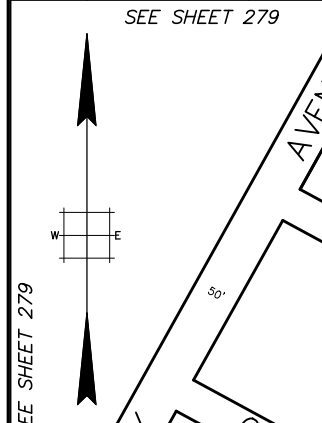


REVISIONS		
DATE	NAME	LIC. No.
08/2021	VINCENT J. RIGELON, JR.	33111



SEE SHEET 279
SEE SHEET 278
SEE SHEET 276

SEE SHEET 282
SEE SHEET 283
SEE SHEET 293

LEGEND

1515	EXISTING BLOCK NUMBER
1515	FORMER BLOCK NUMBER
432	FORMER LOT NUMBER
—	STATE BOUNDARY
- - -	MUNICIPAL BOUNDARY
—	COUNTY BOUNDARY
	ASSESSED AREA LIMIT LINE

SEE SHEET 294

NEW JERSEY DEPARTMENT OF THE TREASURY
DIVISION OF TAXATION
APPROVED AS A TAX MAP PURSUANT
TO THE AUTHORITY OF
N.J.S.A. 54:1-15 AND N.J.S.A. 54:50-1
FOR THE DIRECTOR, DIVISION OF TAXATION

SIGNED BY SUE DAVIDSON, CTA
SUPERVISING FIELD REP

DATED AUGUST 14, 2014 SERIAL # 1043

TAX MAP
TOWNSHIP OF HAMILTON
MERCER COUNTY, NEW JERSEY
SCALE 1" = 100' APRIL, 1996
MICHAEL GUERRIERO, P.L.S.
T & M ASSOCIATES
11 TINDALL ROAD, MIDDLETOWN TOWNSHIP
NEW JERSEY, 07748
TO SHOW CONDITIONS AS OF JULY 14, 2014