

PLOTTED: 03/28/96

BASE INFO - DCA Rotation: 0°00'00" Base Point: 0.0

REVISIONS		
DATE	NAME	LIC. No.
03/2019	VINCENT J. RIGELON, JR.	33111

SEE SHEET 261

SEE SHEET 195

SEE SHEET 284

SEE SHEET 287

SEE SHEET 287

SEE SHEET 287

SEE SHEET 287

SEE SHEET 287

SEE SHEET 287

SEE SHEET 287

SEE SHEET 287

SEE SHEET 287

SEE SHEET 287

SEE SHEET 287

SEE SHEET 287

SEE SHEET 287

SEE SHEET 287

SEE SHEET 287

SEE SHEET 287

SEE SHEET 287

SEE SHEET 287

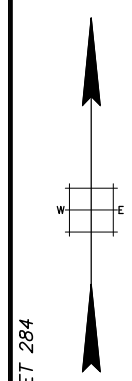
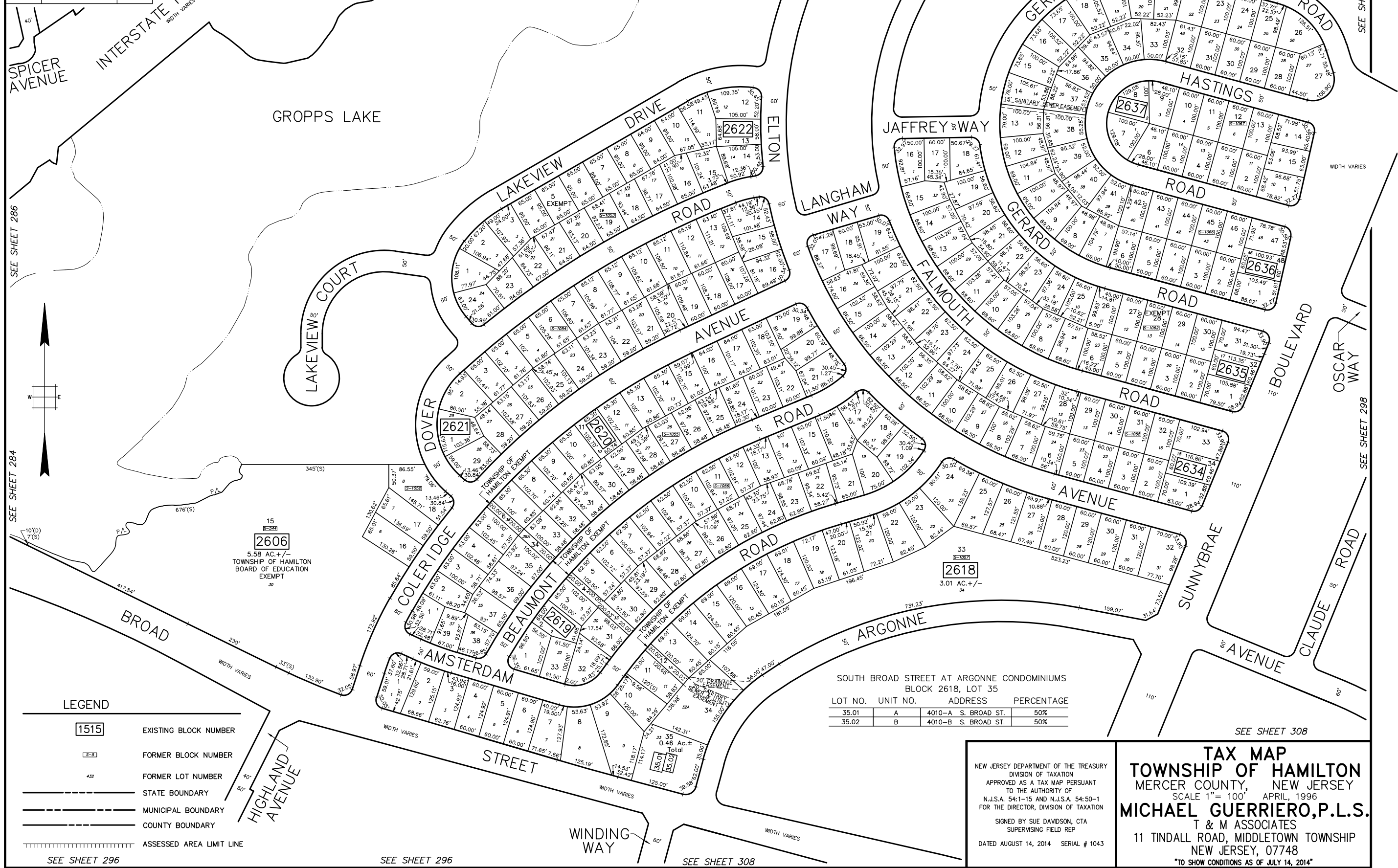
SEE SHEET 287

SEE SHEET 287

SEE SHEET 287

SEE SHEET 287

SEE SHEET 287



**LEGEND**

<span style="border: 1px solid black; padding: 2px;">1515</span>	EXISTING BLOCK NUMBER
<span style="border: 1px dashed black; padding: 2px;">3-3</span>	FORMER BLOCK NUMBER
432	FORMER LOT NUMBER
---	STATE BOUNDARY
---	MUNICIPAL BOUNDARY
---	COUNTY BOUNDARY
	ASSESSED AREA LIMIT LINE

SOUTH BROAD STREET AT ARGONNE CONDOMINIUMS  
BLOCK 2618, LOT 35

LOT NO.	UNIT NO.	ADDRESS	PERCENTAGE
35.01	A	4010-A S. BROAD ST.	50%
35.02	B	4010-B S. BROAD ST.	50%

NEW JERSEY DEPARTMENT OF THE TREASURY  
DIVISION OF TAXATION  
APPROVED AS A TAX MAP PURSUANT  
TO THE AUTHORITY OF  
N.J.S.A. 54:1-15 AND N.J.S.A. 54:50-1  
FOR THE DIRECTOR, DIVISION OF TAXATION  
SIGNED BY SUE DAVIDSON, CTA  
SUPERVISING FIELD REP  
DATED AUGUST 14, 2014 SERIAL # 1043

**TAX MAP**  
**TOWNSHIP OF HAMILTON**  
MERCER COUNTY, NEW JERSEY  
SCALE 1" = 100' APRIL, 1996  
**MICHAEL GUERRIERO, P.L.S.**  
T & M ASSOCIATES  
11 TINDALL ROAD, MIDDLETOWN TOWNSHIP  
NEW JERSEY, 07748  
\*TO SHOW CONDITIONS AS OF JULY 14, 2014\*

SEE SHEET 296

SEE SHEET 296

WINDING WAY

SEE SHEET 308

SEE SHEET 308