

PLOTTED: 06/13/96
BASE INFO - DCA Rotation: 000000
Base Point: 0.0

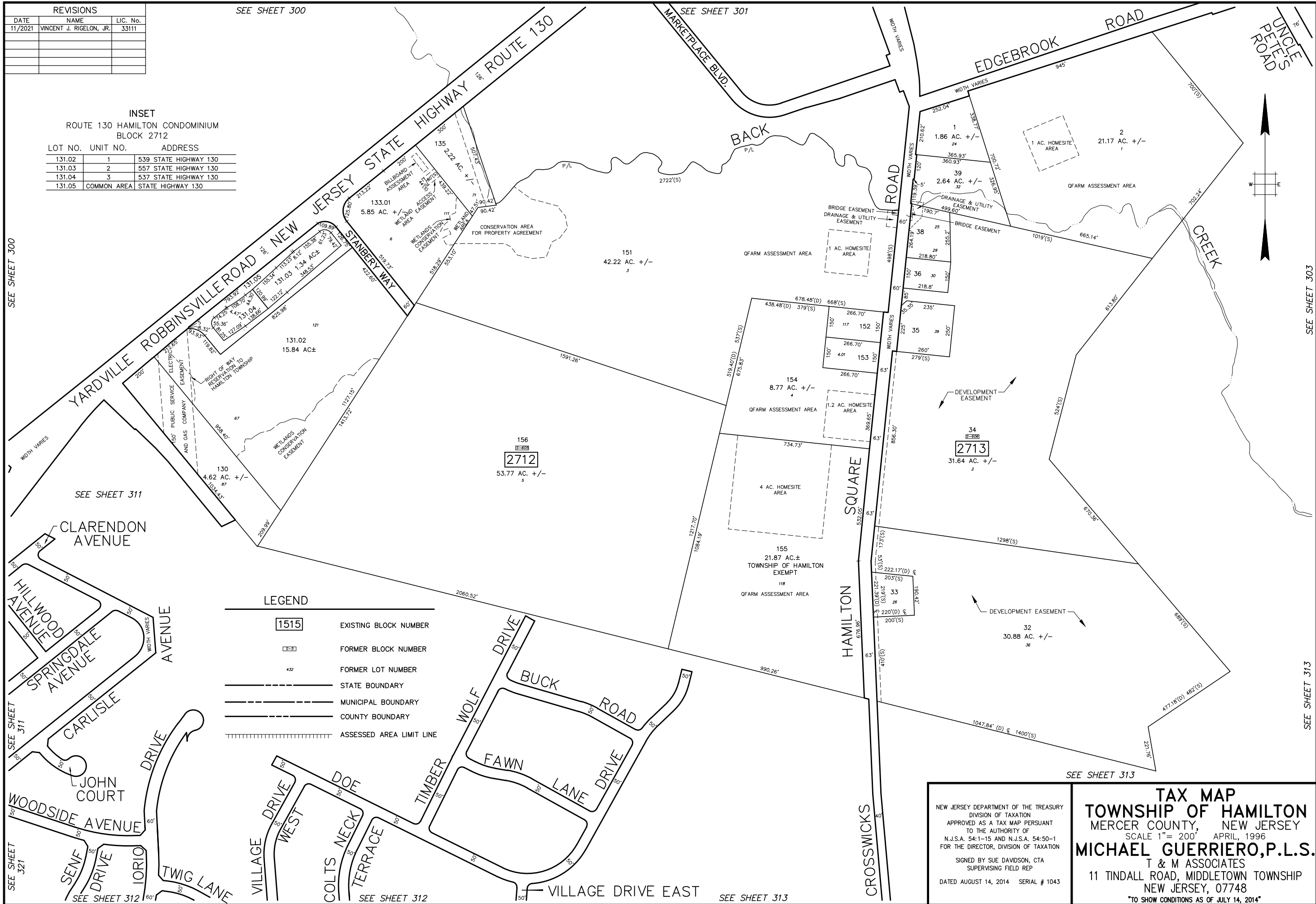
REVISIONS		
DATE	NAME	LIC. No.
11/2021	VINCENT J. RIGELON, JR.	33111

SEE SHEET 300

SEE SHEET 301

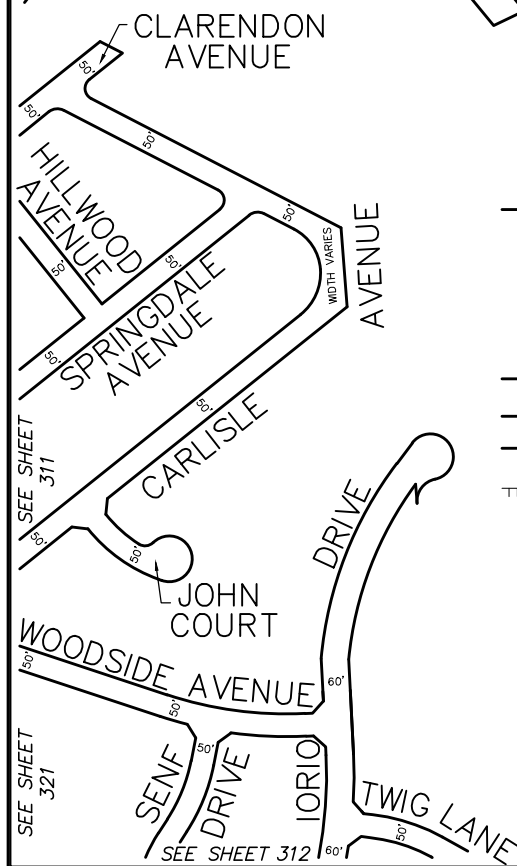
INSET
ROUTE 130 HAMILTON CONDOMINIUM
BLOCK 2712

LOT NO.	UNIT NO.	ADDRESS
131.02	1	539 STATE HIGHWAY 130
131.03	2	557 STATE HIGHWAY 130
131.04	3	537 STATE HIGHWAY 130
131.05	COMMON AREA	STATE HIGHWAY 130



LEGEND

1515	EXISTING BLOCK NUMBER
6-5	FORMER BLOCK NUMBER
432	FORMER LOT NUMBER
---	STATE BOUNDARY
- - -	MUNICIPAL BOUNDARY
---	COUNTY BOUNDARY
	ASSESSED AREA LIMIT LINE



NEW JERSEY DEPARTMENT OF THE TREASURY
DIVISION OF TAXATION
APPROVED AS A TAX MAP PURSUANT
TO THE AUTHORITY OF
N.J.S.A. 54:1-15 AND N.J.S.A. 54:50-1
FOR THE DIRECTOR, DIVISION OF TAXATION

SIGNED BY SUE DAVIDSON, CTA
SUPERVISING FIELD REP

DATED AUGUST 14, 2014 SERIAL # 1043

**TAX MAP
TOWNSHIP OF HAMILTON
MERCER COUNTY, NEW JERSEY**
SCALE 1" = 200' APRIL, 1996
MICHAEL GUERRIERO, P.L.S.
T & M ASSOCIATES
11 TINDALL ROAD, MIDDLETOWN TOWNSHIP
NEW JERSEY, 07748
TO SHOW CONDITIONS AS OF JULY 14, 2014