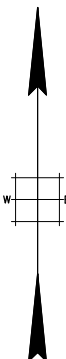
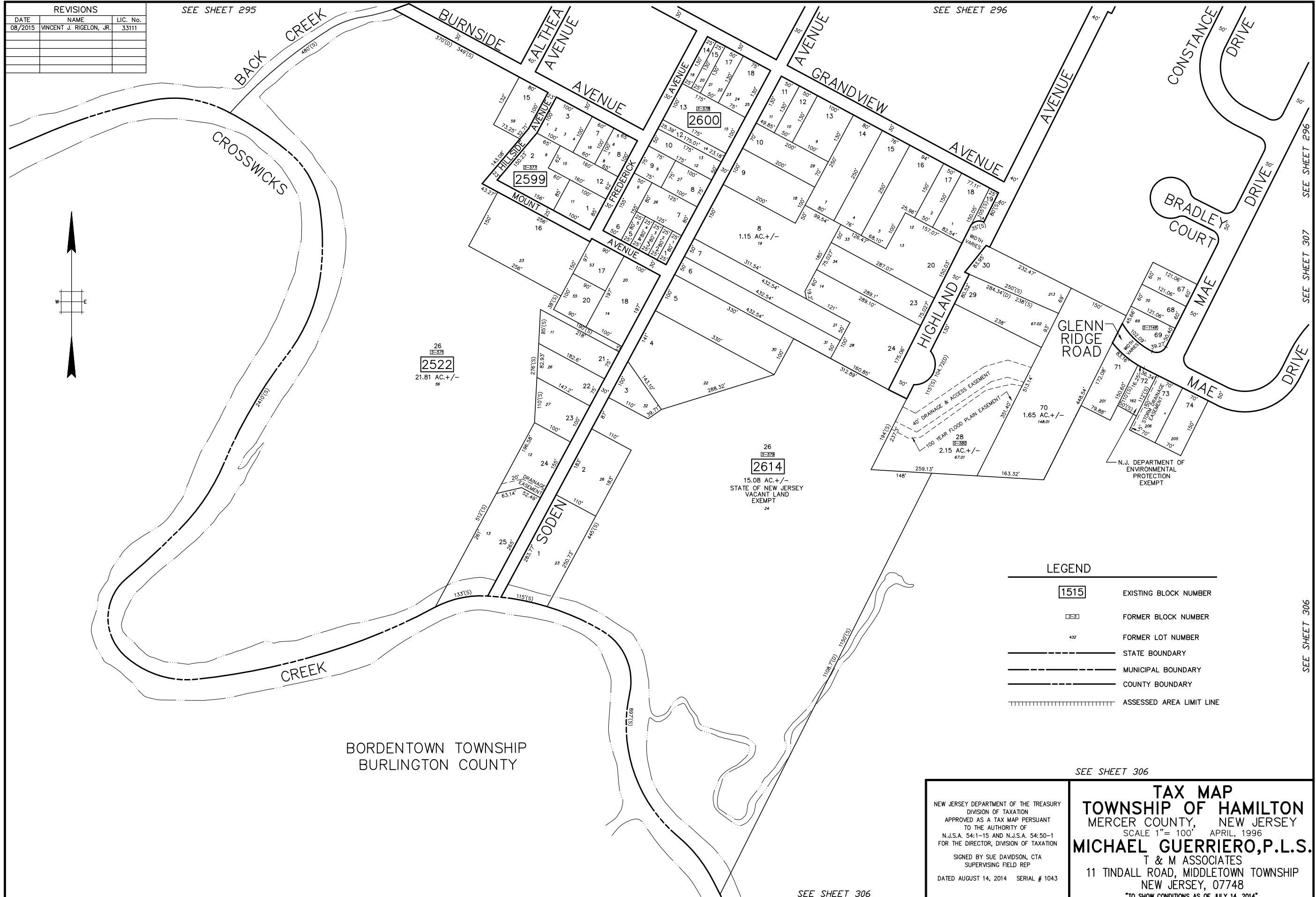


REVISIONS		
DATE	NAME	LIC. No.
08/2015	VINCENT J. RIGELON, JR.	33111

SEE SHEET 295

SEE SHEET 296



BORDENTOWN TOWNSHIP
BURLINGTON COUNTY

LEGEND

1515	EXISTING BLOCK NUMBER
S-5	FORMER BLOCK NUMBER
432	FORMER LOT NUMBER
—————	STATE BOUNDARY
- - - - -	MUNICIPAL BOUNDARY
—————	COUNTY BOUNDARY
	ASSESSED AREA LIMIT LINE

SEE SHEET 306

NEW JERSEY DEPARTMENT OF THE TREASURY
DIVISION OF TAXATION
APPROVED AS A TAX MAP PURSUANT
TO THE AUTHORITY OF
N.J.S.A. 54-1-15 AND N.J.S.A. 54-50-1
FOR THE DIRECTOR, DIVISION OF TAXATION

SIGNED BY SUE DAVIDSON, CTA
SUPERVISING FIELD REP

DATED AUGUST 14, 2014 SERIAL # 1043

TAX MAP
TOWNSHIP OF HAMILTON
MERCER COUNTY, NEW JERSEY
SCALE 1" = 100' APRIL, 1996
MICHAEL GUERRIERO, P.L.S.
T & M ASSOCIATES
11 TINDALL ROAD, MIDDLETOWN TOWNSHIP
NEW JERSEY, 07748
TO SHOW CONDITIONS AS OF JULY 14, 2014

SEE SHEET 306

SEE SHEET 296

SEE SHEET 307

SEE SHEET 306