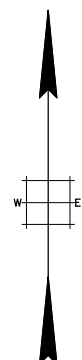
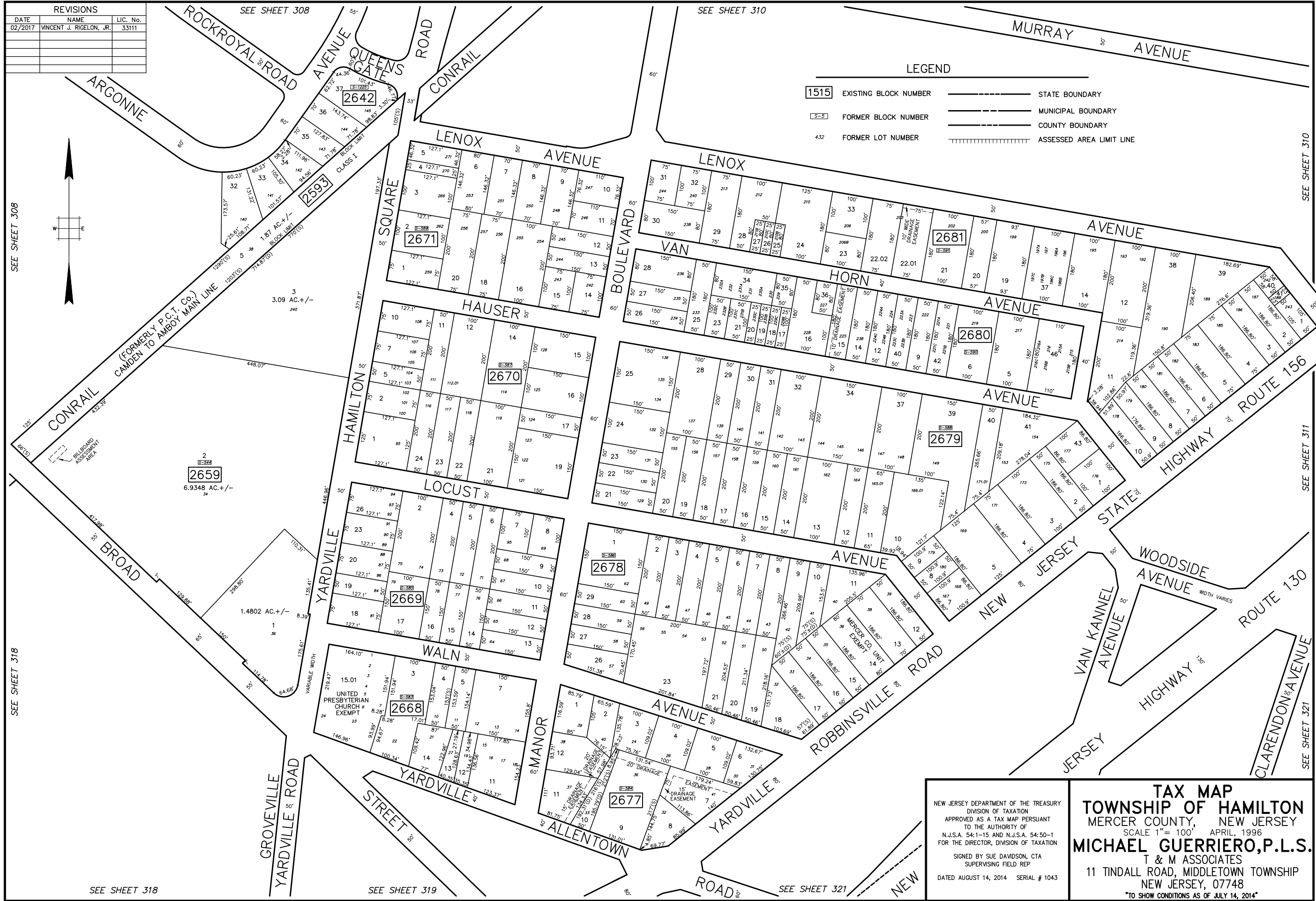


REVISIONS		
DATE	NAME	LIC. No.
02/2017	VINCENT J. RIGELON, JR.	33111



LEGEND

1515	EXISTING BLOCK NUMBER		STATE BOUNDARY
S-5	FORMER BLOCK NUMBER		MUNICIPAL BOUNDARY
432	FORMER LOT NUMBER		COUNTY BOUNDARY
			ASSESSED AREA LIMIT LINE



SEE SHEET 308

SEE SHEET 310

SEE SHEET 318

SEE SHEET 311

SEE SHEET 318

SEE SHEET 319

SEE SHEET 321

SEE SHEET 321

NEW JERSEY DEPARTMENT OF THE TREASURY
 DIVISION OF TAXATION
 APPROVED AS A TAX MAP PURSUANT
 TO THE AUTHORITY OF
 N.J.S.A. 54-1-15 AND N.J.S.A. 54-50-1
 FOR THE DIRECTOR, DIVISION OF TAXATION

SIGNED BY SUE DAVIDSON, CTA
 SUPERVISING FIELD REP

DATED AUGUST 14, 2014 SERIAL # 1043

TAX MAP
TOWNSHIP OF HAMILTON
 MERCER COUNTY, NEW JERSEY
 SCALE 1" = 100' APRIL, 1996
MICHAEL GUERRIERO, P.L.S.
 T & M ASSOCIATES
 11 TINDALL ROAD, MIDDLETOWN TOWNSHIP
 NEW JERSEY, 07748
 TO SHOW CONDITIONS AS OF JULY 14, 2014