

REVISIONS		
DATE	NAME	LIC. No.
11/2021	VINCENT J. RIGELON, JR.	33111

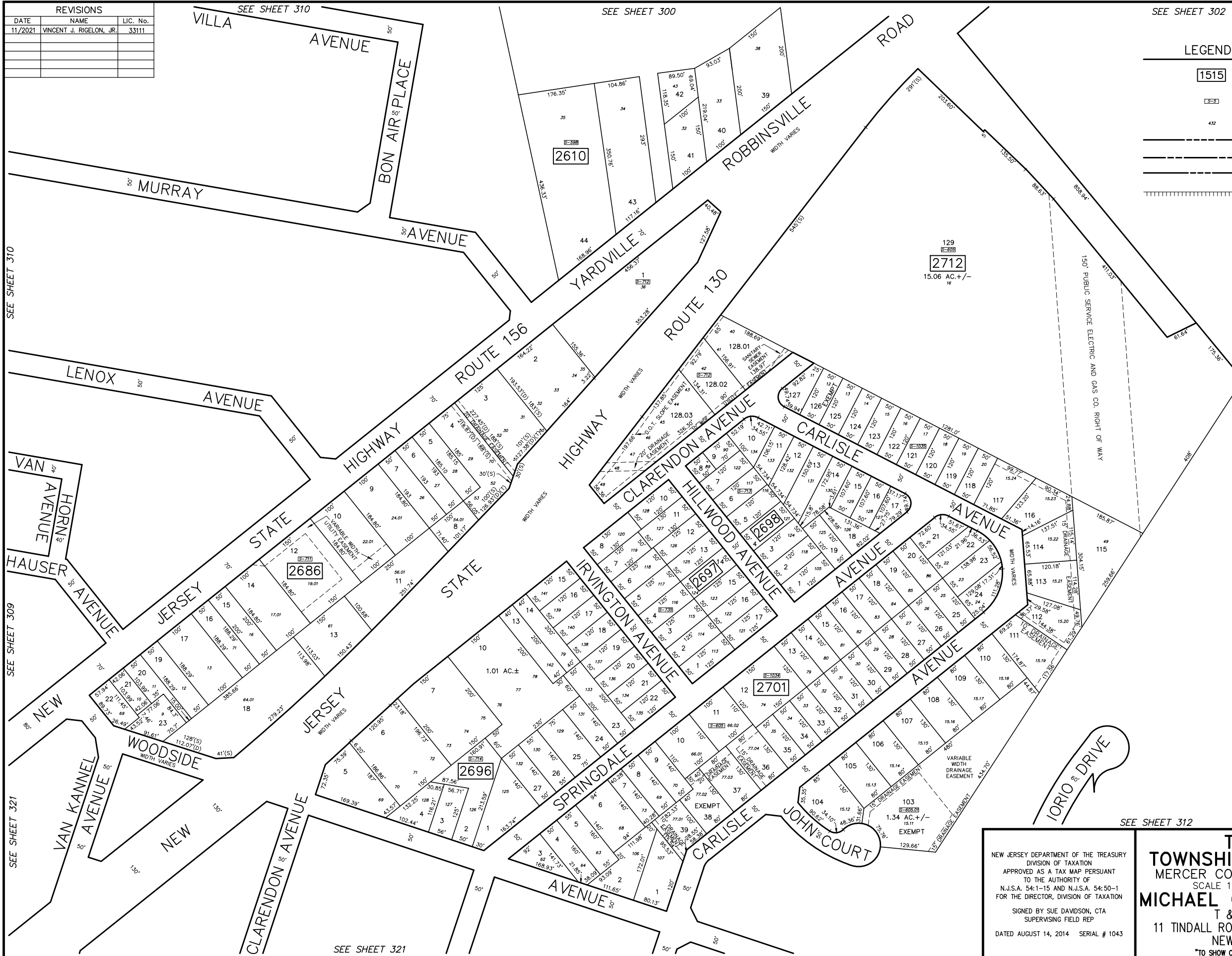
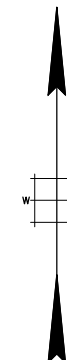
SEE SHEET 302

LEGEND

- 1515 EXISTING BLOCK NUMBER
- 32 FORMER BLOCK NUMBER
- 432 FORMER LOT NUMBER
- STATE BOUNDARY
- MUNICIPAL BOUNDARY
- COUNTY BOUNDARY
- ASSESSED AREA LIMIT LINE

SEE SHEET 302

SEE SHEET 312



SEE SHEET 310

SEE SHEET 309

SEE SHEET 321

SEE SHEET 321

NEW JERSEY DEPARTMENT OF THE TREASURY
 DIVISION OF TAXATION
 APPROVED AS A TAX MAP PURSUANT
 TO THE AUTHORITY OF
 N.J.S.A. 54:1-15 AND N.J.S.A. 54:50-1
 FOR THE DIRECTOR, DIVISION OF TAXATION
 SIGNED BY SUE DAVDSON, CTA
 SUPERVISING FIELD REP
 DATED AUGUST 14, 2014 SERIAL # 1043

SEE SHEET 312

TAX MAP
TOWNSHIP OF HAMILTON
 MERCER COUNTY, NEW JERSEY
 SCALE 1" = 100' APRIL, 1996
MICHAEL GUERRIERO, P.L.S.
 T & M ASSOCIATES
 11 TINDALL ROAD, MIDDLETOWN TOWNSHIP
 NEW JERSEY, 07748
 TO SHOW CONDITIONS AS OF JULY 14, 2014