

REVISIONS		
DATE	NAME	LIC. No.
01/2018	VINCENT J. RIGELON, JR.	33111

SEE SHEET 315

SEE SHEET 317

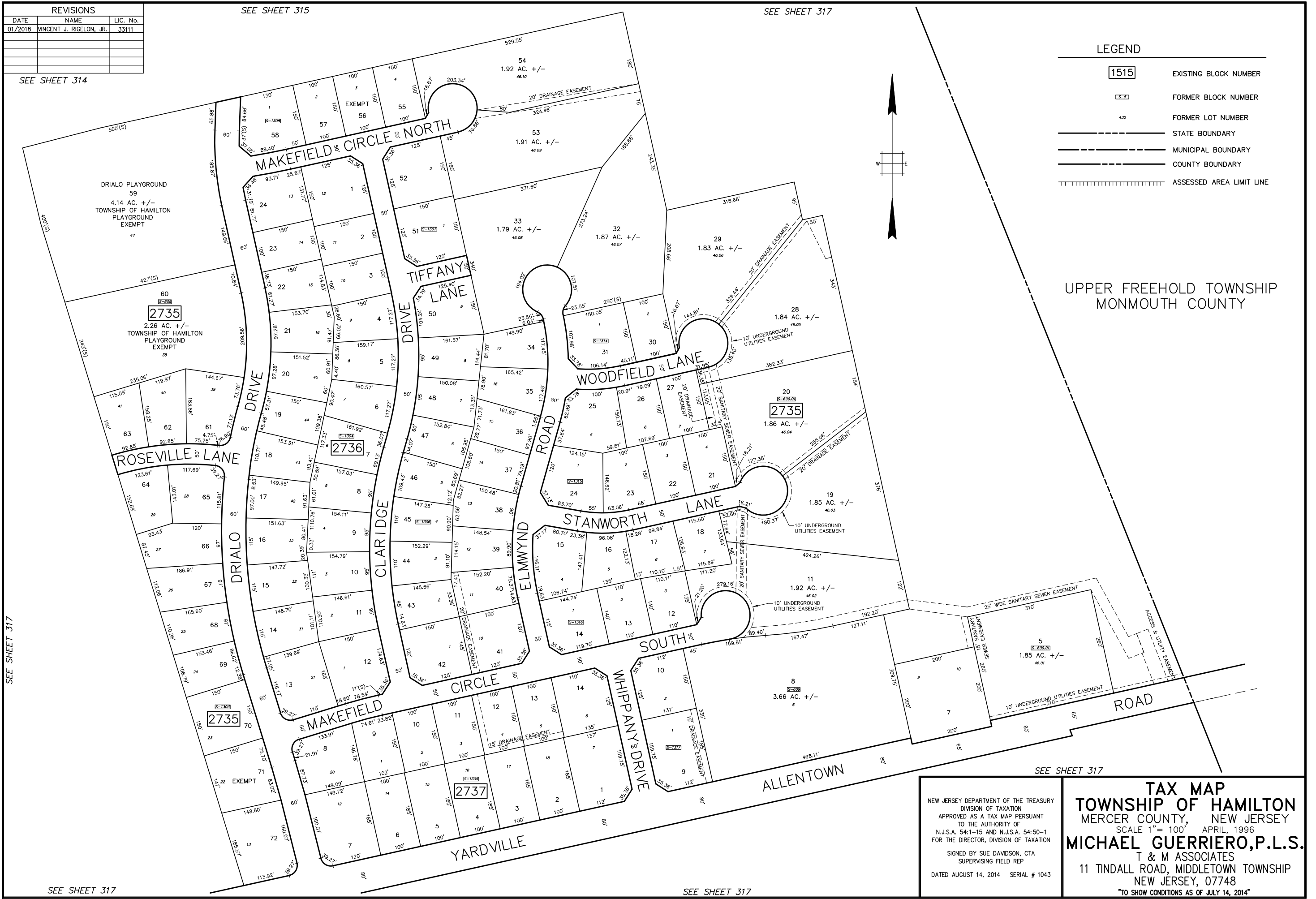
LEGEND	
1515	EXISTING BLOCK NUMBER
1515	FORMER BLOCK NUMBER
432	FORMER LOT NUMBER
	STATE BOUNDARY
	MUNICIPAL BOUNDARY
	COUNTY BOUNDARY
	ASSESSED AREA LIMIT LINE

UPPER FREEHOLD TOWNSHIP
MONMOUTH COUNTY

SEE SHEET 314

SEE SHEET 317

SEE SHEET 317



SEE SHEET 317

SEE SHEET 317

NEW JERSEY DEPARTMENT OF THE TREASURY
DIVISION OF TAXATION
APPROVED AS A TAX MAP PURSUANT
TO THE AUTHORITY OF
N.J.S.A. 54:1-15 AND N.J.S.A. 54:50-1
FOR THE DIRECTOR, DIVISION OF TAXATION

SIGNED BY SUE DAVIDSON, CTA
SUPERVISING FIELD REP

DATED AUGUST 14, 2014 SERIAL # 1043

TAX MAP
TOWNSHIP OF HAMILTON
MERCER COUNTY, NEW JERSEY
SCALE 1" = 100' APRIL, 1996
MICHAEL GUERRIERO, P.L.S.
T & M ASSOCIATES
11 TINDALL ROAD, MIDDLETOWN TOWNSHIP
NEW JERSEY, 07748
TO SHOW CONDITIONS AS OF JULY 14, 2014