

REVISIONS		
DATE	NAME	LIC. No.
11/2017	VINCENT J. RIGELON, JR.	33111

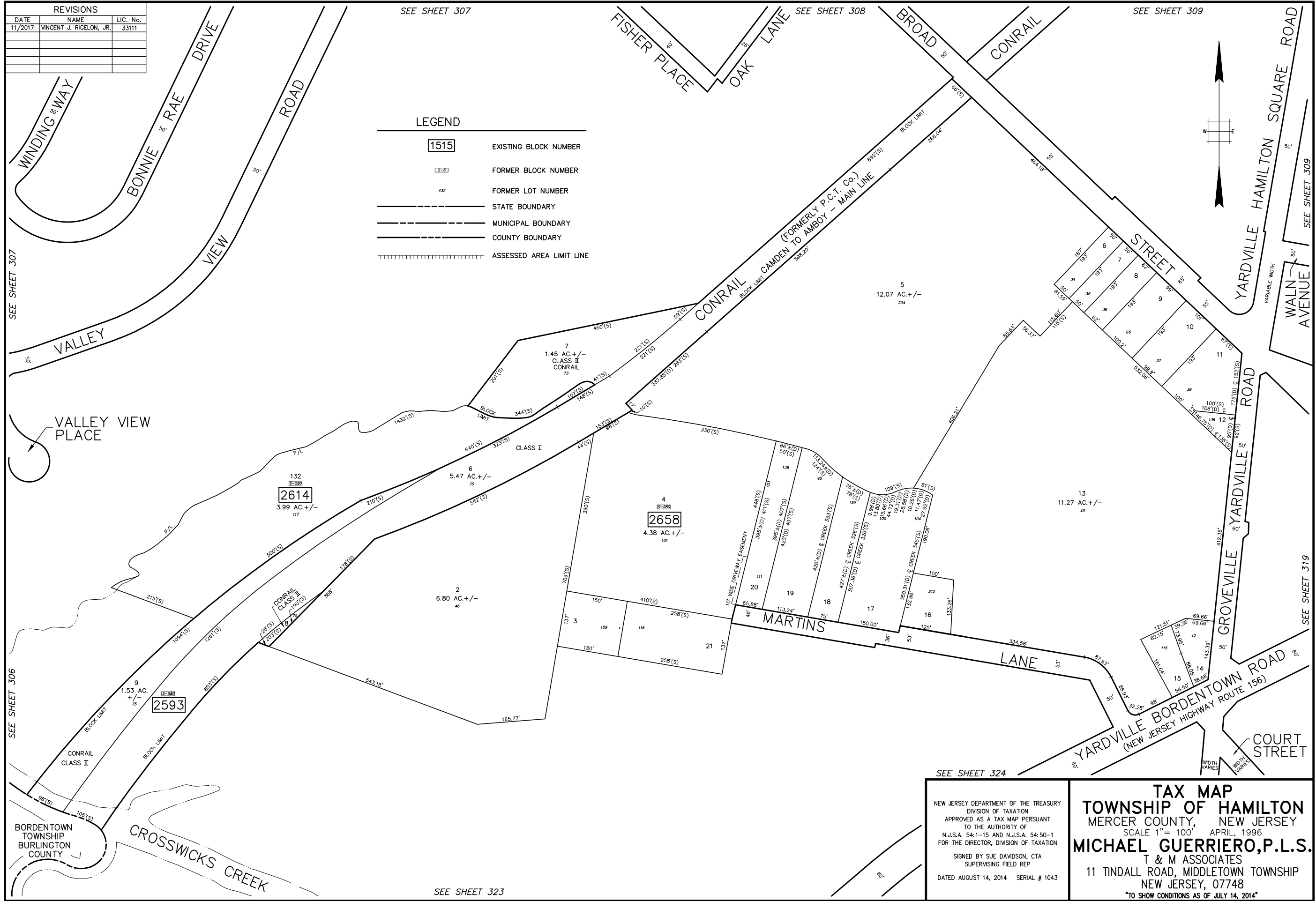
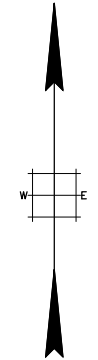
SEE SHEET 307

SEE SHEET 308

SEE SHEET 309

**LEGEND**

<span style="border: 1px solid black; padding: 2px;">1515</span>	EXISTING BLOCK NUMBER
<span style="border: 1px dashed black; padding: 2px;">153</span>	FORMER BLOCK NUMBER
432	FORMER LOT NUMBER
---	STATE BOUNDARY
---	MUNICIPAL BOUNDARY
---	COUNTY BOUNDARY
	ASSESSED AREA LIMIT LINE



SEE SHEET 307

SEE SHEET 306

SEE SHEET 323

SEE SHEET 324

SEE SHEET 309

SEE SHEET 319

BORDENTOWN  
TOWNSHIP  
BURLINGTON  
COUNTY

NEW JERSEY DEPARTMENT OF THE TREASURY  
DIVISION OF TAXATION  
APPROVED AS A TAX MAP PURSUANT  
TO THE AUTHORITY OF  
N.J.S.A. 54:1-15 AND N.J.S.A. 54:50-1  
FOR THE DIRECTOR, DIVISION OF TAXATION

SIGNED BY SUE DAVIDSON, CTA  
SUPERVISING FIELD REP

DATED AUGUST 14, 2014 SERIAL # 1043

**TAX MAP**  
**TOWNSHIP OF HAMILTON**  
MERCER COUNTY, NEW JERSEY  
SCALE 1" = 100' APRIL, 1996  
**MICHAEL GUERRIERO, P.L.S.**  
T & M ASSOCIATES  
11 TINDALL ROAD, MIDDLETOWN TOWNSHIP  
NEW JERSEY, 07748  
\*TO SHOW CONDITIONS AS OF JULY 14, 2014\*