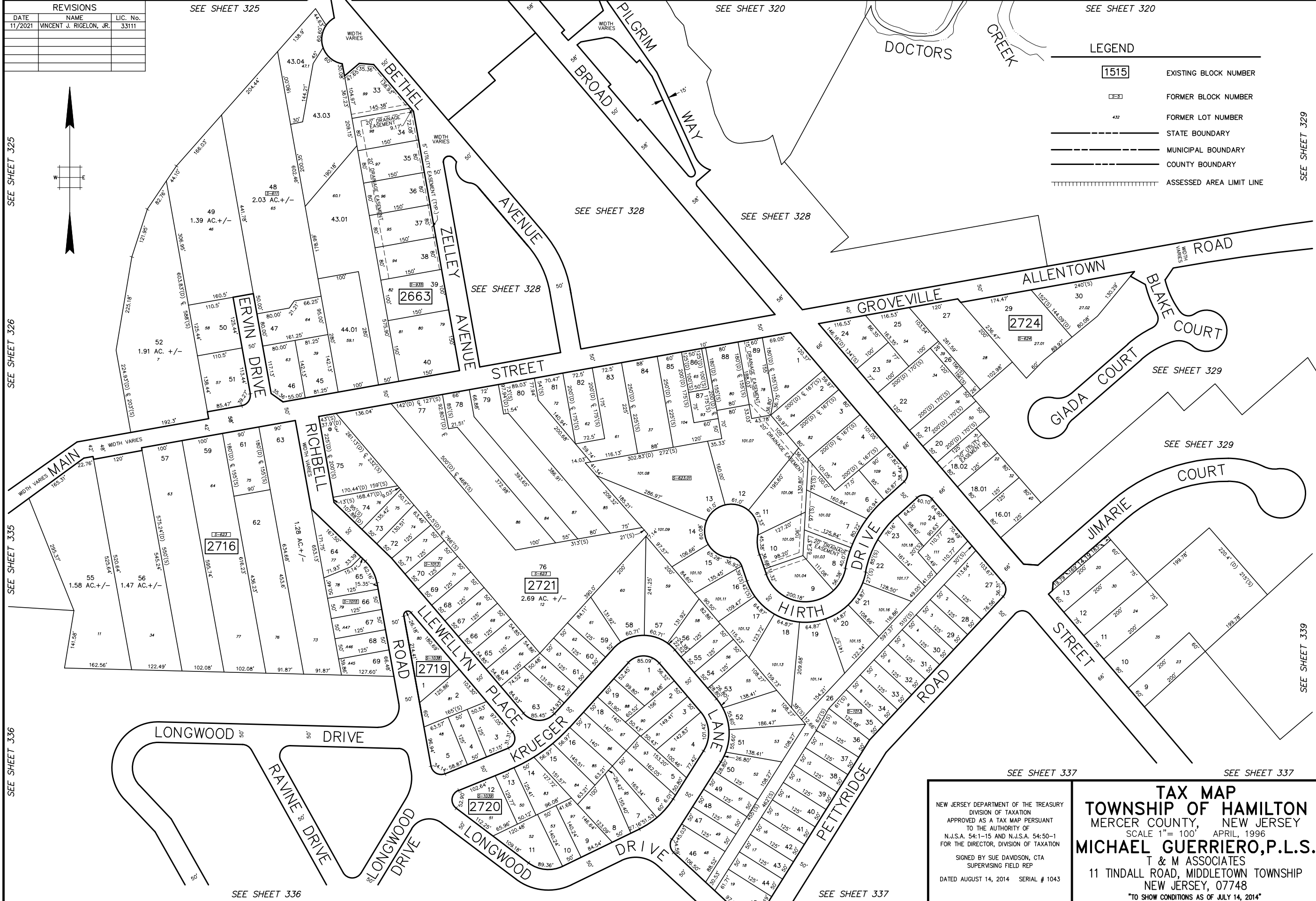
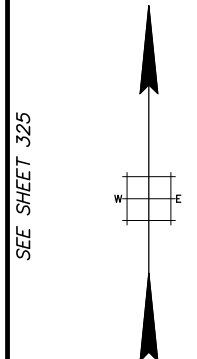


REVISIONS		
DATE	NAME	LIC. No.
11/2021	VINCENT J. RIGELON, JR.	33111



LEGEND	
<span style="border: 1px solid black; padding: 2px;">1515</span>	EXISTING BLOCK NUMBER
<span style="border: 1px dashed black; padding: 2px;">5-1</span>	FORMER BLOCK NUMBER
432	FORMER LOT NUMBER
---	STATE BOUNDARY
---	MUNICIPAL BOUNDARY
---	COUNTY BOUNDARY
	ASSESSED AREA LIMIT LINE

SEE SHEET 325  
SEE SHEET 326  
SEE SHEET 335  
SEE SHEET 336

SEE SHEET 320

SEE SHEET 320

SEE SHEET 328

SEE SHEET 328

SEE SHEET 329

SEE SHEET 329

SEE SHEET 329

SEE SHEET 339

SEE SHEET 337

SEE SHEET 337

SEE SHEET 336

SEE SHEET 337

NEW JERSEY DEPARTMENT OF THE TREASURY  
DIVISION OF TAXATION  
APPROVED AS A TAX MAP PURSUANT  
TO THE AUTHORITY OF  
N.J.S.A. 54:1-15 AND N.J.S.A. 54:50-1  
FOR THE DIRECTOR, DIVISION OF TAXATION  
SIGNED BY SUE DAVDSON, CTA  
SUPERVISING FIELD REP  
DATED AUGUST 14, 2014 SERIAL # 1043

**TAX MAP**  
**TOWNSHIP OF HAMILTON**  
MERCER COUNTY, NEW JERSEY  
SCALE 1" = 100' APRIL, 1996  
**MICHAEL GUERRIERO, P.L.S.**  
T & M ASSOCIATES  
11 TINDALL ROAD, MIDDLETOWN TOWNSHIP  
NEW JERSEY, 07748  
"TO SHOW CONDITIONS AS OF JULY 14, 2014"