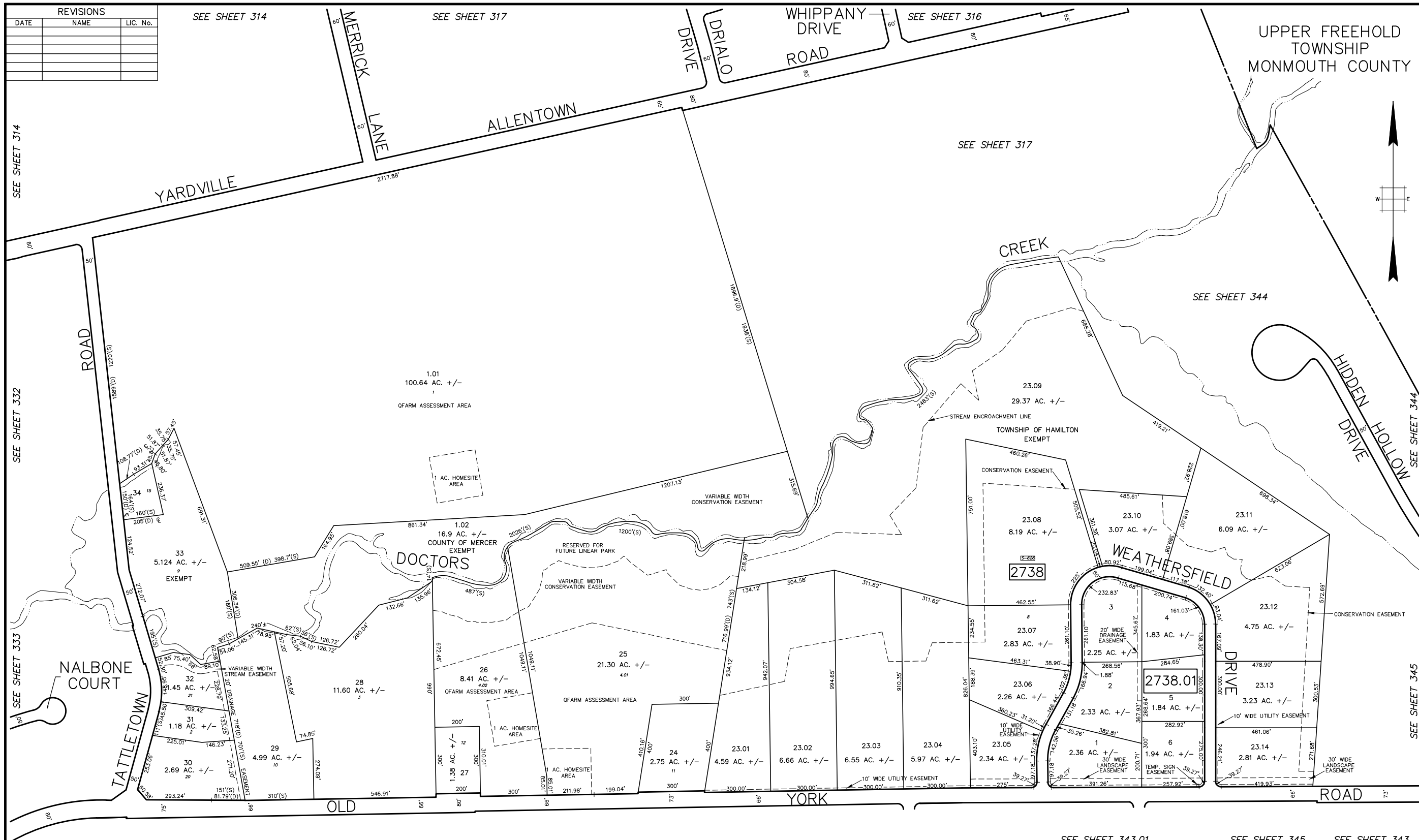


BASE INFO - DCA Rotation: 0°00'00" Base Point: 0,0 PLOTTED: 03/28/96



| REVISIONS | | |
|-----------|------|----------|
| DATE | NAME | LIC. No. |
| | | |
| | | |
| | | |
| | | |

SEE SHEET 314

SEE SHEET 332

SEE SHEET 333

SEE SHEET 314

SEE SHEET 317

SEE SHEET 316

SEE SHEET 317

SEE SHEET 344

SEE SHEET 344

SEE SHEET 345

LEGEND

- 1515 EXISTING BLOCK NUMBER
- 3-5 FORMER BLOCK NUMBER
- 432 FORMER LOT NUMBER
- STATE BOUNDARY
- ===== MUNICIPAL BOUNDARY
- COUNTY BOUNDARY
- ||||| ASSESSED AREA LIMIT LINE

SEE SHEET 343

SEE SHEET 343.01

SEE SHEET 343.01

SEE SHEET 345

SEE SHEET 343

NEW JERSEY DEPARTMENT OF THE TREASURY
DIVISION OF TAXATION
APPROVED AS A TAX MAP PURSUANT
TO THE AUTHORITY OF
N.J.S.A. 54:1-15 AND N.J.S.A. 54:50-1
FOR THE DIRECTOR, DIVISION OF TAXATION

SIGNED BY SUE DAVIDSON, CTA
SUPERVISING FIELD REP

DATED AUGUST 14, 2014 SERIAL # 1043

TAX MAP
TOWNSHIP OF HAMILTON
MERCER COUNTY, NEW JERSEY
SCALE 1" = 200' APRIL, 1996
MICHAEL GUERRIERO, P.L.S.
T & M ASSOCIATES
11 TINDALL ROAD, MIDDLETOWN TOWNSHIP
NEW JERSEY, 07748
TO SHOW CONDITIONS AS OF JULY 14, 2014