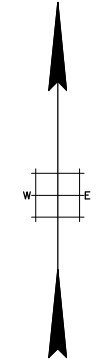
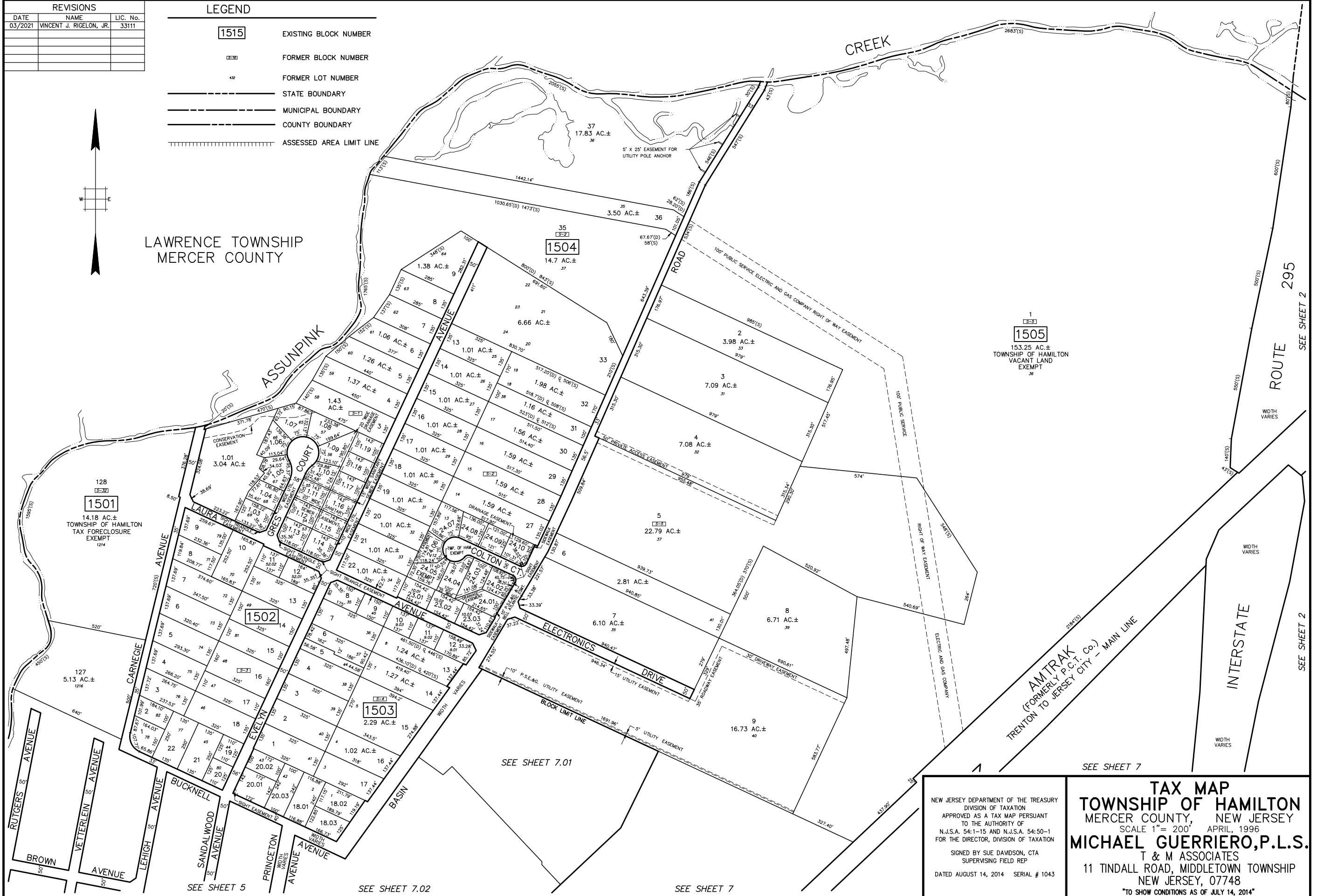


REVISIONS		
DATE	NAME	LIC. No.
03/2021	VINCENT J. RIGELON, JR.	33111

LEGEND	
1515	EXISTING BLOCK NUMBER
1515	FORMER BLOCK NUMBER
42	FORMER LOT NUMBER
	STATE BOUNDARY
	MUNICIPAL BOUNDARY
	COUNTY BOUNDARY
	ASSESSED AREA LIMIT LINE



LAWRENCE TOWNSHIP
MERCER COUNTY



NEW JERSEY DEPARTMENT OF THE TREASURY
DIVISION OF TAXATION
APPROVED AS A TAX MAP PURSUANT
TO THE AUTHORITY OF
N.J.S.A. 54:1-15 AND N.J.S.A. 54:50-1
FOR THE DIRECTOR, DIVISION OF TAXATION
SIGNED BY SUE DAWSON, CTA
SUPERVISING FIELD REP
DATED AUGUST 14, 2014 SERIAL # 1043

TAX MAP
TOWNSHIP OF HAMILTON
MERCER COUNTY, NEW JERSEY
SCALE 1" = 200' APRIL, 1996
MICHAEL GUERRIERO, P.L.S.
T & M ASSOCIATES
11 TINDALL ROAD, MIDDLETOWN TOWNSHIP
NEW JERSEY, 07748
"TO SHOW CONDITIONS AS OF JULY 14, 2014"

SEE SHEET 5

SEE SHEET 7.02

SEE SHEET 7

SEE SHEET 7

ROUTE 295
SEE SHEET 2

SEE SHEET 2