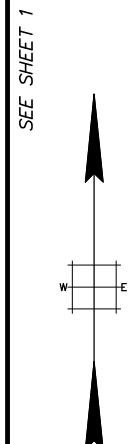
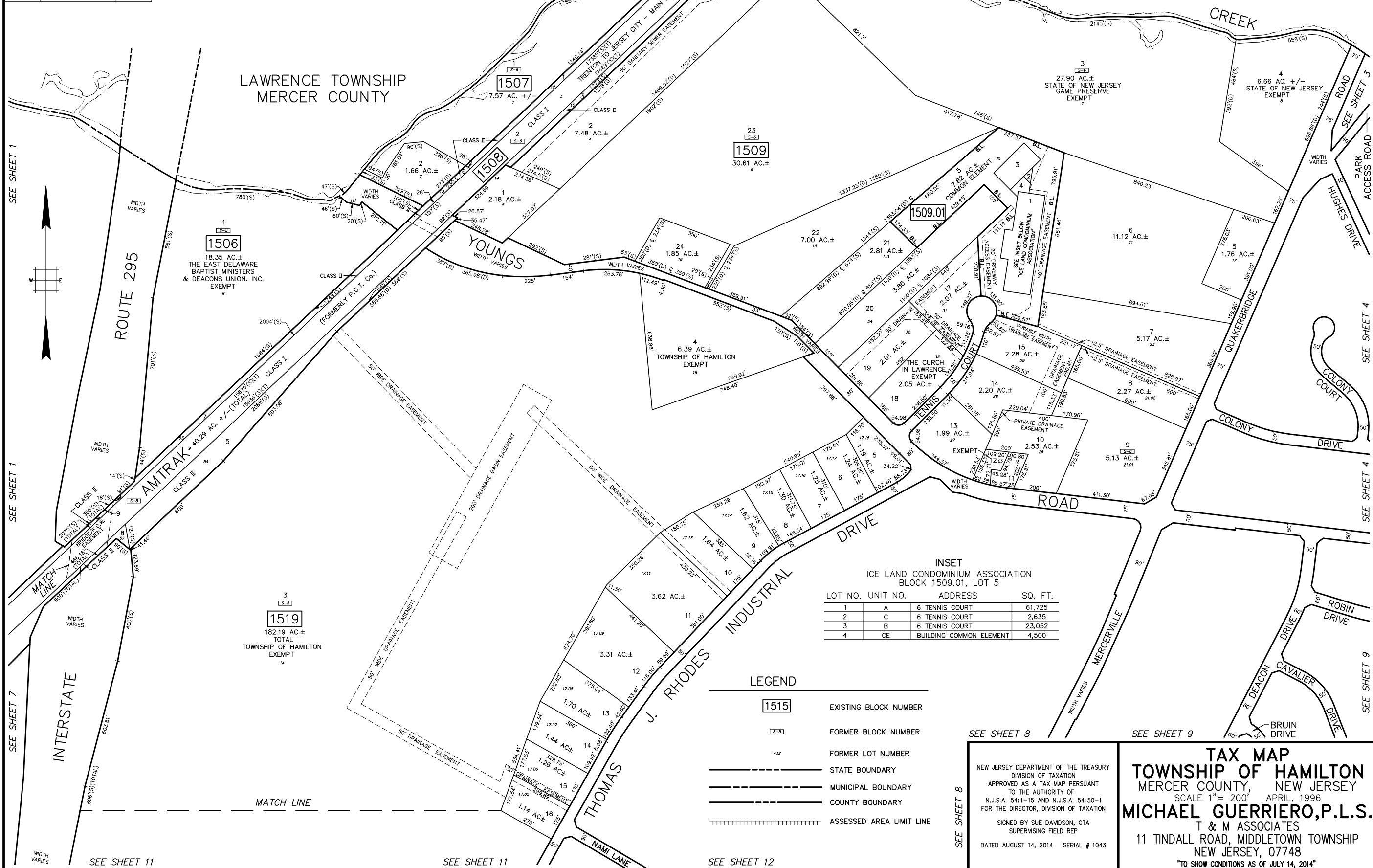


REVISIONS		
DATE	NAME	LIC. No.
04/2019	VINCENT J. RIGELON, JR.	33111



INSET
ICE LAND CONDOMINIUM ASSOCIATION
BLOCK 1509.01, LOT 5

LOT NO.	UNIT NO.	ADDRESS	SQ. FT.
1	A	6 TENNIS COURT	61,725
2	C	6 TENNIS COURT	2,635
3	B	6 TENNIS COURT	23,052
4	CE	BUILDING COMMON ELEMENT	4,500

LEGEND

1515	EXISTING BLOCK NUMBER
1515	FORMER BLOCK NUMBER
1515	FORMER LOT NUMBER
---	STATE BOUNDARY
---	MUNICIPAL BOUNDARY
---	COUNTY BOUNDARY
	ASSESSED AREA LIMIT LINE

SEE SHEET 8

NEW JERSEY DEPARTMENT OF THE TREASURY
DIVISION OF TAXATION
APPROVED AS A TAX MAP PURSUANT
TO THE AUTHORITY OF
N.J.S.A. 54:1-15 AND N.J.S.A. 54:50-1
FOR THE DIRECTOR, DIVISION OF TAXATION

SIGNED BY SUE DAVSON, CTA
SUPERVISING FIELD REP

DATED AUGUST 14, 2014 SERIAL # 1043

TAX MAP
TOWNSHIP OF HAMILTON
MERCER COUNTY, NEW JERSEY
SCALE 1" = 200' APRIL, 1996
MICHAEL GUERRIERO, P.L.S.
T & M ASSOCIATES
11 TINDALL ROAD, MIDDLETOWN TOWNSHIP
NEW JERSEY, 07748
"TO SHOW CONDITIONS AS OF JULY 14, 2014"