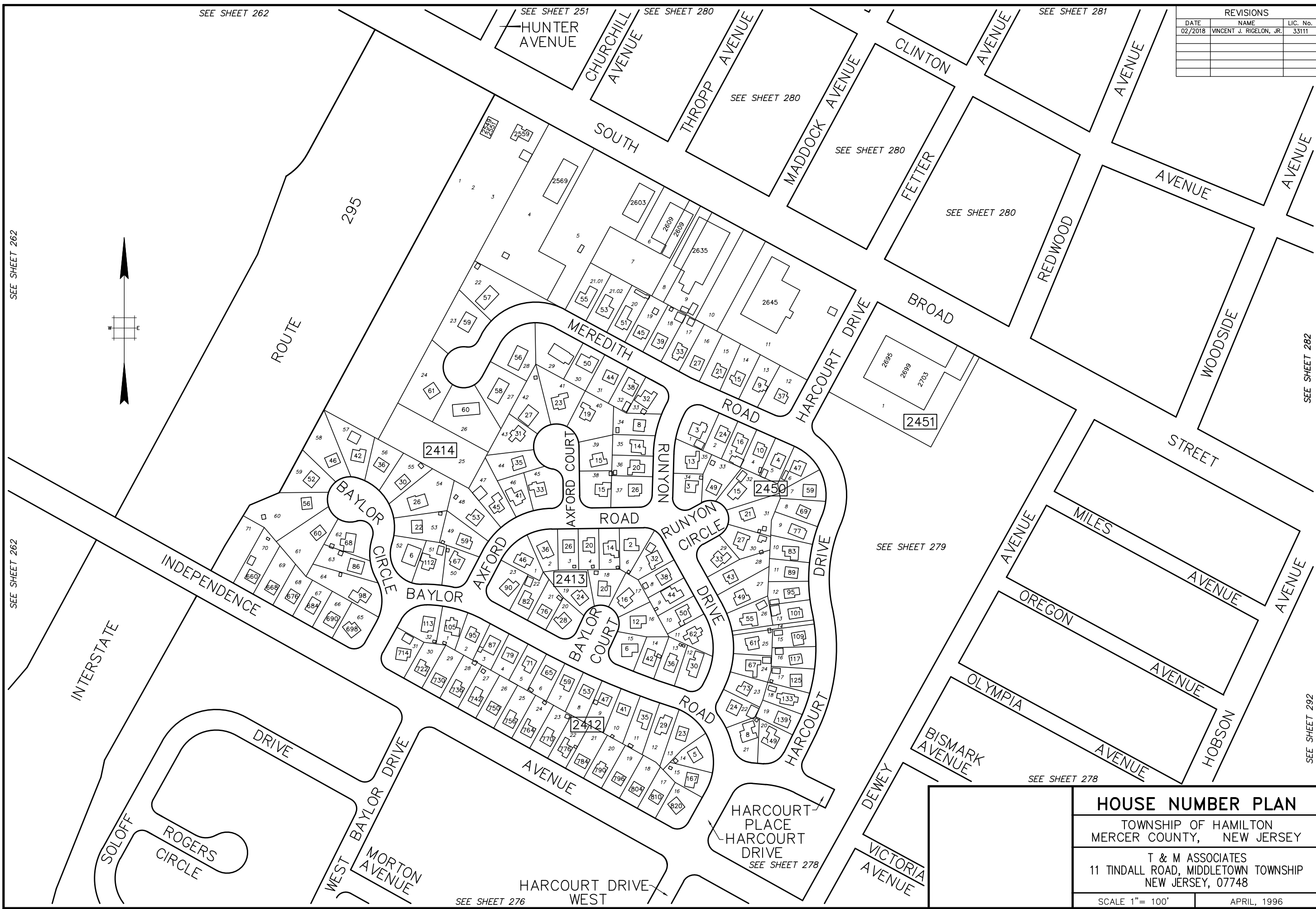


REVISIONS		
DATE	NAME	LIC. No.
02/2018	VINCENT J. RIGELON, JR.	33111



HOUSE NUMBER PLAN
 TOWNSHIP OF HAMILTON
 MERCER COUNTY, NEW JERSEY

T & M ASSOCIATES
 11 TINDALL ROAD, MIDDLETOWN TOWNSHIP
 NEW JERSEY, 07748

SCALE 1" = 100' APRIL, 1996

BASE INFO - DCA Rotation: 0°00'00" Base Point: 0,0

PLOTTED: 04/15/96

SEE SHEET 262

SEE SHEET 262

SEE SHEET 262

SEE SHEET 251

SEE SHEET 280

SEE SHEET 281

SEE SHEET 276

SEE SHEET 278

SEE SHEET 278

SEE SHEET 279

SEE SHEET 278

SEE SHEET 282

SEE SHEET 292